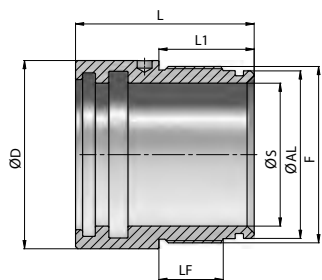
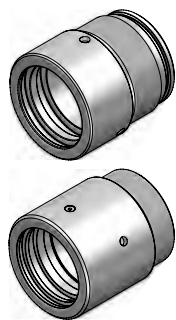
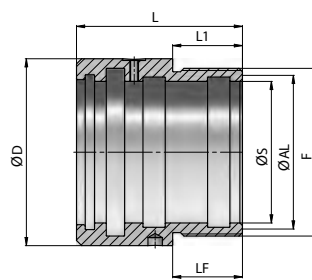


Plungerführung GG

250 bar



TYP 1



TYP 2

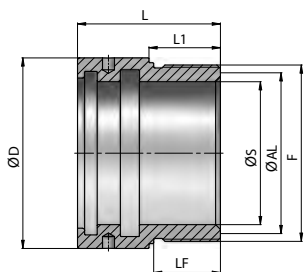
Artikel-Nr.	TYP	ØS	ØAL	ØD	F	LF	L	L1	kg		Dichtsatz
901497	1	20	30	39.0	M34x1.5	15	57	27	0,25		691047
901062	1	25	35	44.0	M39x1.5	19	65	32	0,34		691382
901063	1	30	40	49.0	M44x1.5	19	65	32	0,39		691074
901064	1	35	45	54.0	M49x1.5	19	65	32	0,44		691064
901065	1	40	50	59.0	M54x1.5	22	70	35	0,53		690619
901066	1	45	55	64.0	M60x1.5	22	70	35	0,59		691323
901067	1	50	60	69.0	M64x1.5	22	75	40	0,67		691051
901068	1	60	70	79.0	M74x1.5	27	75	40	0,78		690627
901069	2	70	85	100.0	M90x2	30	90	30	1,99		691372
901070	2	80	90	107.0	M96x2	40	95	40	1,90		690726
901071	2	100	120	138.5	M124x2	42	157	42	7,12		692091

Material TYP 1 : Hydraulikguss EN-GJL 250 (G25-UNI 5007/EN 1561)

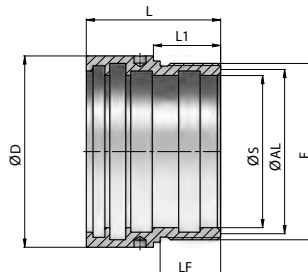
Material TYP 2 : Stahl St 52.3 / UNI C40

Plungerführung St

250 bar



TYP 1



TYP 2

Artikel-Nr.	TYP	ØS	ØAL	ØD	F	LF	L	L1	kg		Dichtsatz
900650	1	20	30	40	M34x1.5	18	42	20	0,22		
902850	1	25	30	40	M34x1.5	18	42	20	0,15		694045
903880	1	30	40	50	M44x1.5	19	46	21	0,33		694061
903881	1	35	40	50	M44x1.5	19	46	21	0,23		694062
903882	1	40	50	60	M54x1.5	28	59	30	0,53		694063
903878	1	45	50	60	M54x1.5	28	59	30	0,37		693175
903822	1	50	60	70	M64x1.5	28	60	30	0,63		694064
903879	1	60	70	80	M74x1.5	28	60	30	0,75		693176
902887	2	70	80	95	M85x2	32	70	35	1,05		694049
900651	2	80	90	105	M95x2	36	80	40	1,38		
900652	2	90	100	115	M105x2	36	80	40	1,41		
900653	2	100	110	125	M115x2	45	100	50	2,02		

Material TYP 1 : Stahl 9SMn28 mit "NI-TEMPER-BEHANDLUNG"

Material TYP 2 : Stahl St 52.3 / UNI C40