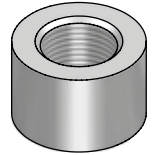
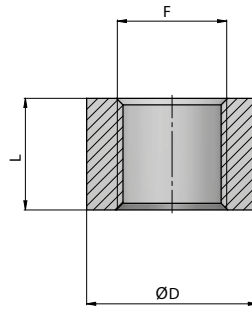


# Schweissmuffen standard

250 bar

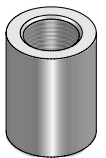
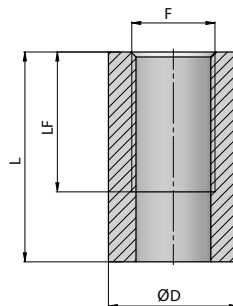


| Artikel-Nr. | F<br>BSP | L    | ØD | kg x100 | Artikel-Nr. | F       | L  | ØD | kg x100 |
|-------------|----------|------|----|---------|-------------|---------|----|----|---------|
| 901165      | 1/8"     | 14.0 | 20 | 2,80    | 901176      | M12x1.5 | 16 | 22 | 3,70    |
| 901166      | 1/4"     | 16.0 | 22 | 3,50    | 901177      | M14x1.5 | 16 | 22 | 3,20    |
| 901167      | 3/8"     | 17.0 | 26 | 4,70    | 901178      | M16x1.5 | 17 | 26 | 4,90    |
| 901168      | 1/2"     | 18.0 | 30 | 6,10    | 901179      | M18x1.5 | 18 | 28 | 5,70    |
| 901170      | 3/4"     | 20.0 | 38 | 10,50   | 901180      | M20x1.5 | 18 | 30 | 6,10    |
| 901171      | 1"       | 25.0 | 45 | 16,90   | 901181      | M22x1.5 | 18 | 30 | 5,30    |
| 901172      | 1"1/4    | 24.5 | 55 | 22,60   |             |         |    |    |         |
| 901173      | 1"1/2    | 30.0 | 60 | 28,90   |             |         |    |    |         |
| 901174      | 2"       | 30.0 | 70 | 30,70   |             |         |    |    |         |

Material : Stahl

# Schweissmuffen lang

250 bar



| Artikel-Nr. | F<br>BSP | LF | L  | ØD | kg x 100 |
|-------------|----------|----|----|----|----------|
| 901527      | 1/4"     | 27 | 40 | 22 | 8,60     |
| 901528      | 3/8"     | 28 | 42 | 26 | 11,70    |
| 901529      | 1/2"     | 33 | 48 | 30 | 16,30    |

Material : Stahl