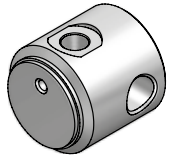
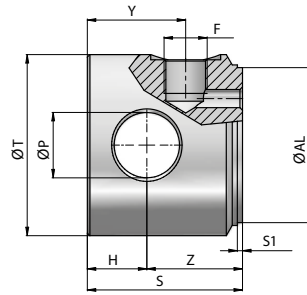


Zylinderboden C

250 bar

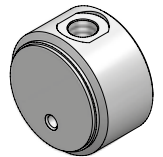
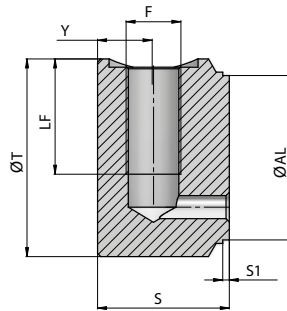


Artikel-Nr.	ØAL	ØT	ØP	Z	H	F BSP	Y	S	S1	kg
901257	40	50	16.20	35	15	1/4"	30	50	2	0,60
901258	50	60	20.25	40	20	3/8"	38	60	2	1,10
901259	60	70	25.25	37	23	3/8"	38	60	2	1,40
901260	70	80	25.25	37	23	3/8"	38	60	2	1,95
901261	80	95	30.25	50	25	1/2"	47	75	2	2,50
901262	100	115	35.25	45	30	1/2"	47	75	2	4,50

Material : Stahl S355J0 (Fe510C) - S355JR (A105)

Zylinderboden E

250 bar



Artikel-Nr.	ØAL	ØT	F BSP	LF	Y	S	S1	kg
902386	40	50	1/4"	30	17	40	2	0,54
902387	50	60	3/8"	35	17	40	2	0,77
902388	60	70	3/8"	35	17	40	2	1,10
902389	63	73	3/8"	35	17	40	2	1,17
902390	70	80	3/8"	35	17	40	2	1,41
902391	80	95	1/2"	45	20	50	2	2,49
902750	90	105	1/2"	45	20	50	2	3,11
902392	100	115	1/2"	45	20	50	2	3,70

Material : Stahl S355J0 (Fe510C) - S355JR (A105)