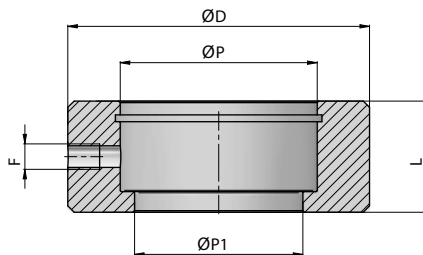


Anschweisringe



Artikel-Nr.	zu	ØD	L	ØP	ØP1	F	kg		
901865	GE ø15	40	15	26	22	M6	0,09		
901692	GE ø20	50	19	35	29	M6	0,15		
901693	GE ø25	60	23	42	35	M6	0,26		
901694	GE ø30	70	28	47	40	M6	0,47		
901695	GE ø35	85	30	55	47	M6	0,79		
901696	GE ø40	95	35	62	53	M8	1,14		
901697	GE ø45	110	40	68	60	M8	1,87		
901698	GE ø50	120	40	75	66	M8	2,18		
901699	GE ø60	138	50	90	80	M8	3,40		

Material : Stahl S355J0 (Fe510C) - S355JR (A105)