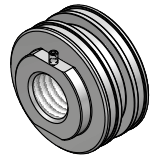
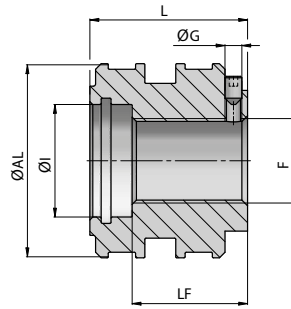


# Kolben 1-teilig mit Gewinde

350 bar



| Artikel-Nr. | ØAL | F       | LF  | L   | ØI  | ØG  | kg    | Dichtsatz |
|-------------|-----|---------|-----|-----|-----|-----|-------|-----------|
| 902500      | 50  | M20x1.5 | 28  | 40  | 21  | M6  | 0,40  | 693695    |
| 900654 (A)  | 50  | M22x1.5 | 28  | 40  | 25  | M6  | 0,36  |           |
| 902501 (A)  | 60  | M27x2   | 30  | 45  | 30  | M6  | 0,60  | 693710    |
| 902731 (A)  | 63  | M27x2   | 30  | 45  | 30  | M6  | 0,67  | 693923    |
| 900655 (A)  | 70  | M33x2   | 41  | 56  | 35  | M6  | 1,00  |           |
| 902185      | 70  | M30x2   | 41  | 56  | 40  | M6  | 1,00  | 691175    |
| 902186      | 80  | M30x2   | 41  | 56  | 40  | M6  | 1,40  | 698389    |
| 900656 (A)  | 80  | M33x2   | 41  | 56  | 40  | M6  | 1,37  |           |
| 902187      | 90  | M36x3   | 40  | 55  | 38  | M6  | 1,80  | 698402    |
| 900657 (A)  | 90  | M40x2   | 40  | 55  | 43  | M6  | 1,71  |           |
| 902188 (A)  | 100 | M42x2   | 41  | 56  | 45  | M6  | 2,20  | 698466    |
| 902189 (A)  | 110 | M48x3   | 55  | 70  | 50  | M8  | 3,40  | 698473    |
| 902190      | 120 | M48x3   | 55  | 70  | 50  | M8  | 4,10  | 698479    |
| 900658 (A)  | 120 | M52x2   | 55  | 70  | 54  | M8  | 3,94  |           |
| 902502      | 125 | M48x3   | 55  | 70  | 51  | M8  | 4,40  | 693697    |
| 900659 (A)  | 125 | M52x2   | 55  | 70  | 54  | M8  | 4,23  |           |
| 902416      | 140 | M48x3   | 57  | 75  | 50  | M8  | 6,00  | 692875    |
| 900660 (A)  | 140 | M64x3   | 57  | 75  | 67  | M8  | 5,55  |           |
| 902503      | 150 | M52x3   | 60  | 80  | 56  | M8  | 7,50  | 693698    |
| 900661 (A)  | 150 | M64x3   | 60  | 80  | 67  | M8  | 6,91  |           |
| 902417      | 160 | M52x3   | 60  | 80  | 56  | M8  | 8,50  | 692886    |
| 900662 (A)  | 160 | M74x3   | 60  | 80  | 76  | M8  | 7,82  |           |
| 902732      | 180 | M80x2   | 85  | 115 | 90  | M10 | 14,10 |           |
| 902733      | 200 | M90x2   | 85  | 115 | 100 | M10 | 17,48 | 693929    |
| 902734      | 220 | M100x2  | 90  | 120 | 110 | M10 | 21,78 | 694541    |
| 902735      | 250 | M115x3  | 100 | 130 | 125 | M10 | 30,04 | 694047    |
| 902736      | 300 | M140x3  | 105 | 140 | 150 | M12 | 44,94 |           |

Material : Stahl UNI C40

(A) = Entworfen in Übereinstimmung mit der Norm DNV TEIL 4 KAPITEL 7 REGELN SCHIFFE / HOCHGESCHWINDIGKEIT, LICHTHANDWERK UND NAVAL OBERFLÄCHENHANDWERK - DRUCK