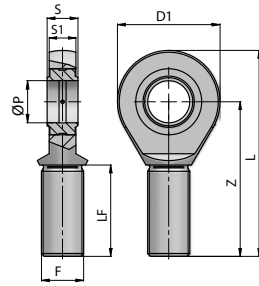
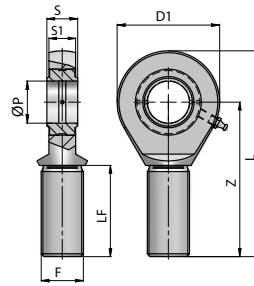


Gelenkkopf mit Aussengewinde

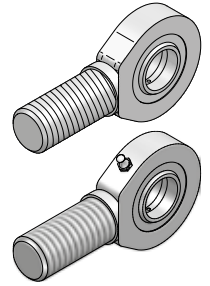
Form M 2RS



906229 + 906230



906231 - 906239



	Artikel-Nr.	ØP	Z	S	D1	S1	L	F	LF min	FC (kN)	kg
	**906229	17	69	14	46	11.0	92.0	M16x2	36	21.2	0,19
	**906230	20	78	16	53	13.0	104.5	M20x1.5	43	30.0	0,31
	906231	25	94	20	64	17.0	126.0	M24x2	53	48.0	0,56
	906232	30	110	22	73	19.0	146.5	M30x2	65	62.0	0,89
	906233	35	140	25	82	21.0	181.0	M36x3	82	80.0	1,40
	906234	40	150	28	92	23.0	196.0	M39x3	86	100.0	1,80
	906235	45	163	32	102	27.0	218.0	M42x3	94	127.0	2,60
	906236	50	185	35	112	30.0	241.0	M45x3	106	156.0	3,40
	906237	60	210	44	135	38.0	277.5	M52x3	115	245.0	5,90
	906238	70	235	49	160	42.0	315.0	M56x4	125	315.0	8,20
	906239	80	270	55	180	47.0	360.0	M64x4	140	400.0	13,10

FC = max. dynamische Belastung

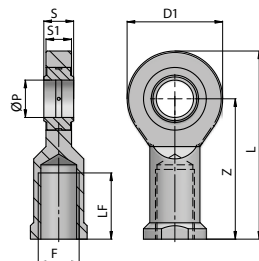
* = ohne Schmiernippel

** = Schmieröffnung im Kopf

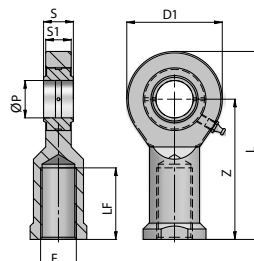
Material : Stahl ISO 12240-4 SERIE E TYP M

Gelenkkopf mit Innengewinde

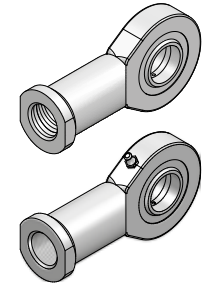
Form M 2RS



906240 + 906241



906242 - 906250



	Artikel-Nr.	ØP	Z	S	D1	S1	L	F	LF min	FC (kN)	kg
	**906240	17	67	14	46	11.0	90.0	M16x2	34	21.2	0,22
	**906241	20	77	16	53	13.0	103.5	M20x1.5	40	30.0	0,35
	906242	25	94	20	64	17.0	126.0	M24x2	48	48.0	0,64
	906243	30	110	22	73	19.0	146.5	M30x2	56	62.0	0,93
	906244	35	125	25	82	21.0	166.0	M36x3	60	80.0	1,30
	906245	40	142	28	92	23.0	188.0	M39x3	67	100.0	2,01
	906246	45	145	32	102	27.0	196.0	M42x3	65	127.0	2,50
	906247	50	160	35	112	30.0	216.0	M45x3	69	156.0	3,50
	906248	60	175	44	135	38.0	242.0	M52x3	73	245.0	5,50
	906249	70	200	49	160	42.0	280.0	M56x4	80	315.0	8,60
	906250	80	230	55	180	47.0	320.0	M64x4	85	400.0	12,00

FC = max. dynamische Belastung

* = ohne Schmiernippel

** = Schmieröffnung im Kopf

Material : Stahl ISO 12240-4 SERIE E TYP M

Birrer Hydraulik AG

Gewerbezone 31

CH-6018 Buttisholz

Tel. +41 (0)41 984 10 84

Fax +41 (0)41 984 10 85

www.birrer-hydraulik.ch

info@birrer-hydraulik.ch

schenker
birrer mehr als hydraulik