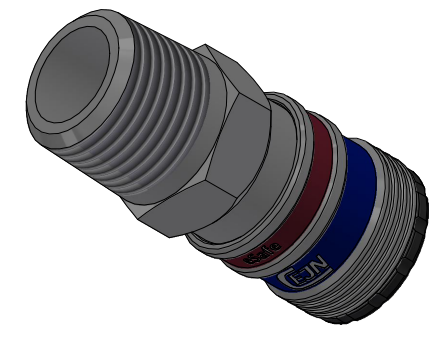
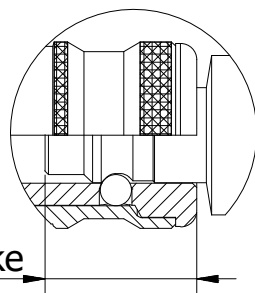
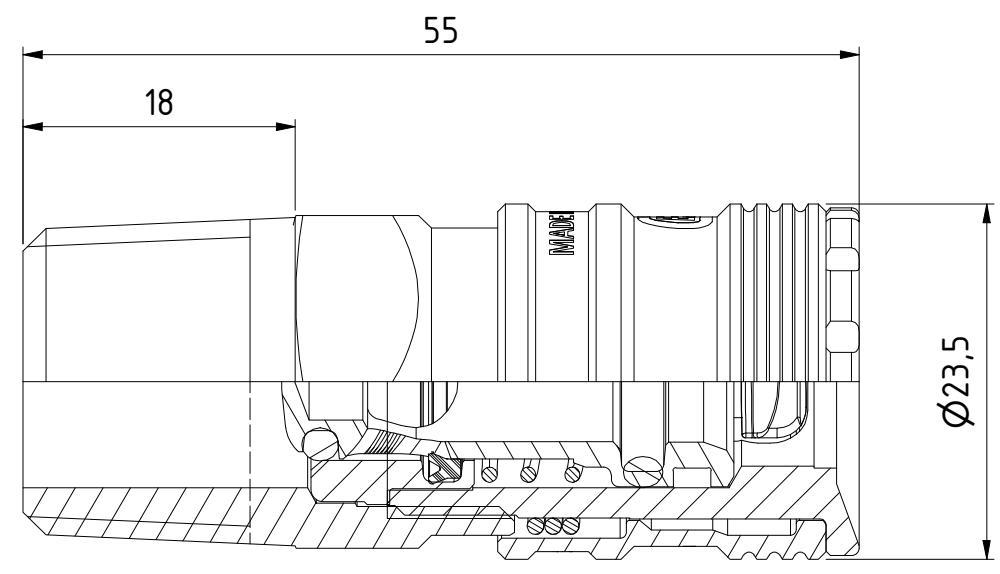


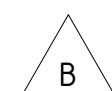
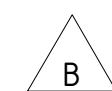
This document must not be copied, either completely or in part, without permission. Any infringement will have legal consequences ©



1 : 1



Connection stroke



Product No.	103002155
Nominal flow \varnothing DN:	5,5 mm
Connection Stroke:	21,8 mm
Max WP Connected:	16 bar
Min BP Connected:	140 bar
Temperature range:	-20°C - +100°C
Connection:	R 1/2" Male
Sealing material:	NBR
Hexagon:	22

Item	Qty	Description	Material
11	1	Spring	Stainless steel
10	1	Spring	Stainless steel
9	1	Back part	Steel, Zn 8 silver
8	1	Lip seal	NBR
7	1	Valve seat	Aluminium Lead Free
6	1	O-ring	NBR
5	1	O-ring	NBR
4	1	Valve	Aluminium Lead Free
3	1	Locking sleeve	Hard. steel, Zn 8 Silver
2	2	Hook	Hard. Steel, Zn-Ni 8 transp.
1	1	Front part	Hard. Steel, Zn-Ni 10 black

State	Production	Drawn	CABLIJA	Checked	ALAL	Approved	OSJO	Date	2025-01-14
		Coupling R 1/2" male NBR - eSafe			ECO	002136	Former No.	Scale	2 : 1
Drawing No.							Issue		Sheet
103002155							B		1 / (1)

A3