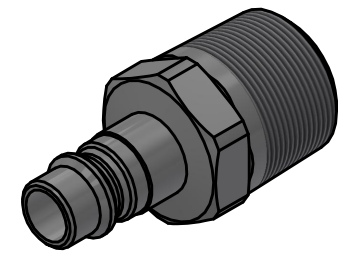
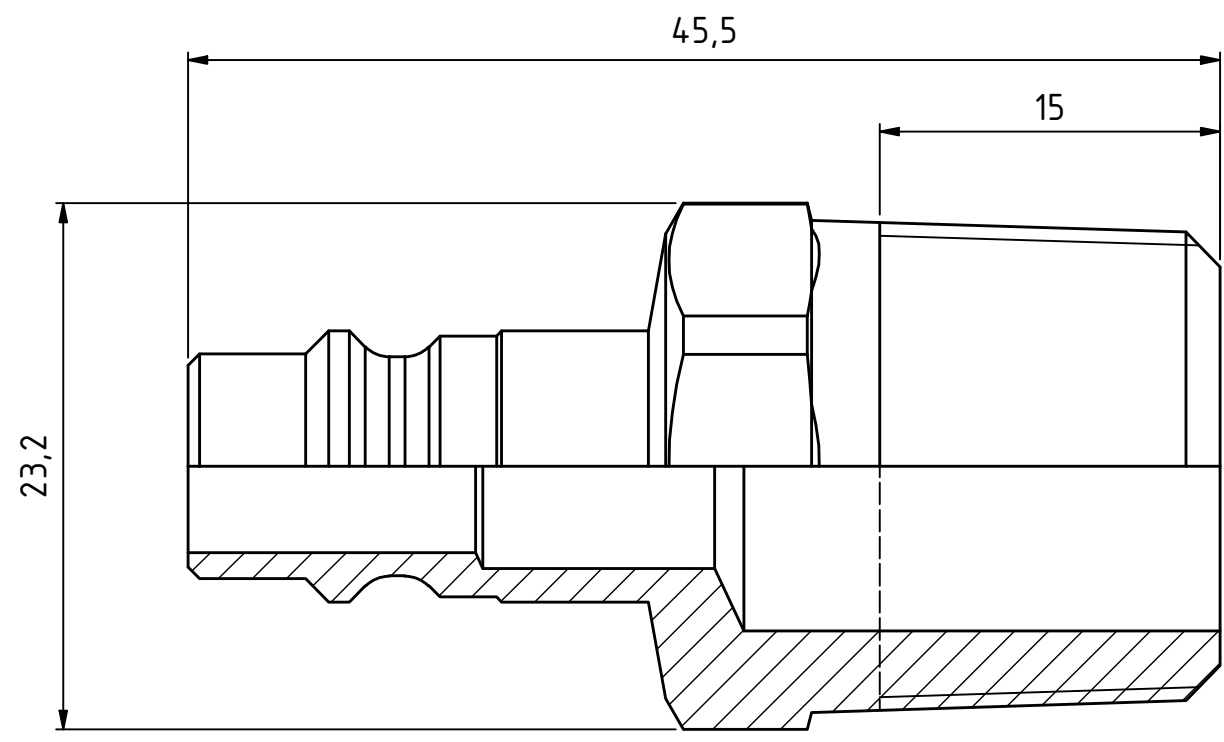



This document must not be copied, either completely or in part, without permission. Any infringement will have legal consequences ©



1 : 1



Product No.	103205155
Nominal flow \varnothing DN:	7,6 mm
Connection Stroke:	- mm
Max WP Connected:	16 bar
Min BP Connected:	140 bar
Temperature range:	-20°C - +100°C
Connection:	R 1/2" Male
Sealing material:	
Hexagon:	21

1	1	Nipple	Hard. Steel FeZn 8 P1	093206415	
Item	Qty	Description	Material	Part Number	
		Scale: 3 : 1	Drawn: CABLHE	Checked: ECO	Date: 2017-04-18
 Assembly Drawing			Drawing No. 103205155		
			Issue: B	Sheet: 1 / (1)	

